

CONTENTS

INSTRUCTIONS [WaterfallDress2-20Instructions.pdf](#)

Introduction 4

Design Your Dress 6

Design Options 7

Fabric Notes 7

Required Yardage and Cutting Layouts 8

A Guide to Fitting 10

Sewing Instructions 14

Before Sewing 15

Inner Belt 16

Dress Front 17

Dress Back 19

Sleeveless Dress 20

Yoke 20

Attach Yoke to Dress 21

Flutter Sleeve 22

Finish Neckline 23

Hem 25

Take Your Dress to the Next Level 26

Play with Contrast Fabrics 27

Lounge in Style 27

Marry It with Lace 28

Pile on the Trim 29

Glossary 30

Pattern Piece Location Guide 38

Pattern Pieces Tiling Maps 38

PATTERN PIECES [WaterfallDress2-20PatternTiled.pdf](#)

See the Pattern Piece Location Guide for each pattern piece's page number to print them individually.

AO SHEETS [WaterfallDress2-20PatternAO.pdf](#)

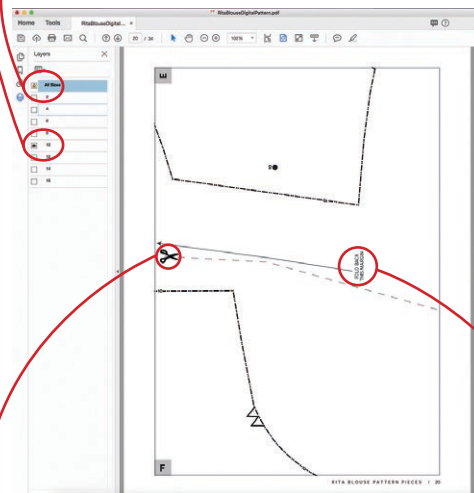
HOW TO USE THIS PATTERN

The pattern pieces are tiled so you can print them on Letter (8½ x 11) or A4 size paper. You can also send the A0 pattern sheet PDF to a local or online printer (like www.pdfplotting.com) to print on large sheets (36" x 48" for U.S. or A0 for international).

This pattern includes size layers. To get the best results, open either the Tiled or A0 pattern pieces PDF in Acrobat Reader.

Open the Layers Palette (View>Show/Hide>Navigation Panes>Layers) and hide all of the layer(s) except for the ones you want to print by clicking on the eye icon.

The All Sizes layer has general pattern information and will always print.



WORKING WITH THE TILED PIECES

Go to File>Print and change the page range to the pages you need for the pieces you've chosen (see Pattern Pieces Printing Index). Make sure the Page Sizing settings to 100% or Actual Size. Test this after printing by measuring the 1" test box on the first page of the bodice pattern pieces.

Cut apart any pattern pieces that share a page by cutting on the gray long dashed lines. Then fold back the page margins on each page as directed.

Tape the pages together, butting up the folded page edges with the gray margin lines, matching up the letters in gray boxes.





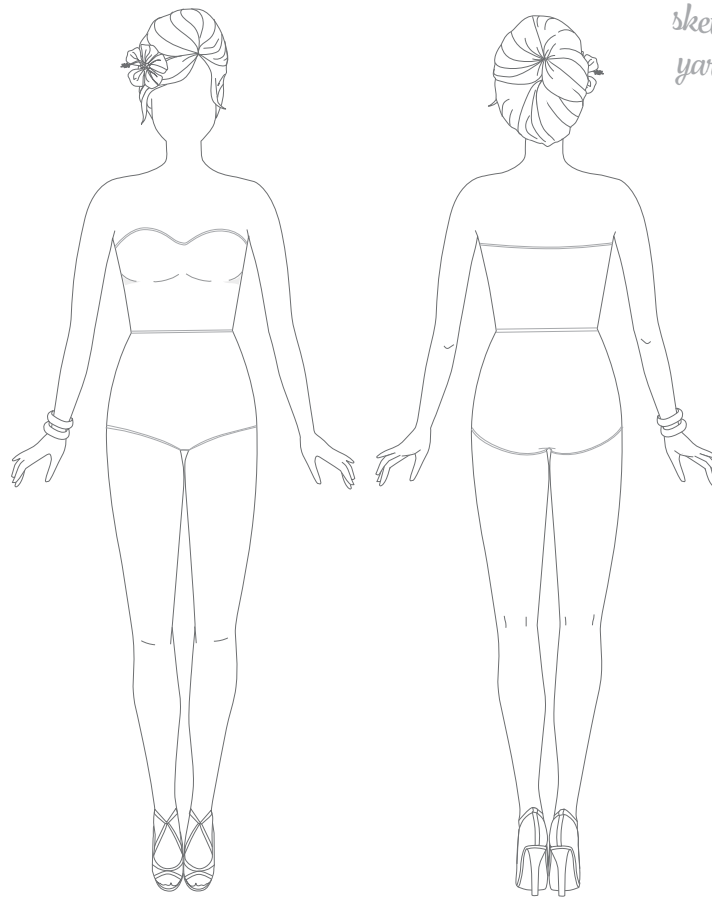
Meet the Waterfall Dress! This pattern has been long-requested by the Charm community, and I'm delighted to share it with you. Inspired by '60s Hawaiian sewing patterns, this is a fitted feminine dress with a flattering (and clever!) hidden belt for comfortable waist shaping. The dress is just as interesting from the back, with a waterfall of fabric falling from your shoulders and swooshing as you move.

Make it in a lightweight rayon print for lounging by the pool, a fancy silk crepe de chine for cocktails and conversation under the stars, or a luxurious charmeuse to take you into the boudoir. Or make all three!

Because we love for you to “choose your own sewing adventure,” we've included two different lengths as well as two different sleeve options. The best part is that our range of sizes from 2–20 and 18–34 (plus cup sizes A–H) make this coveted vintage style accessible for everyone. I hope you feel beautiful and glamorous in your new Waterfall Dress!

xoxo, Gertie

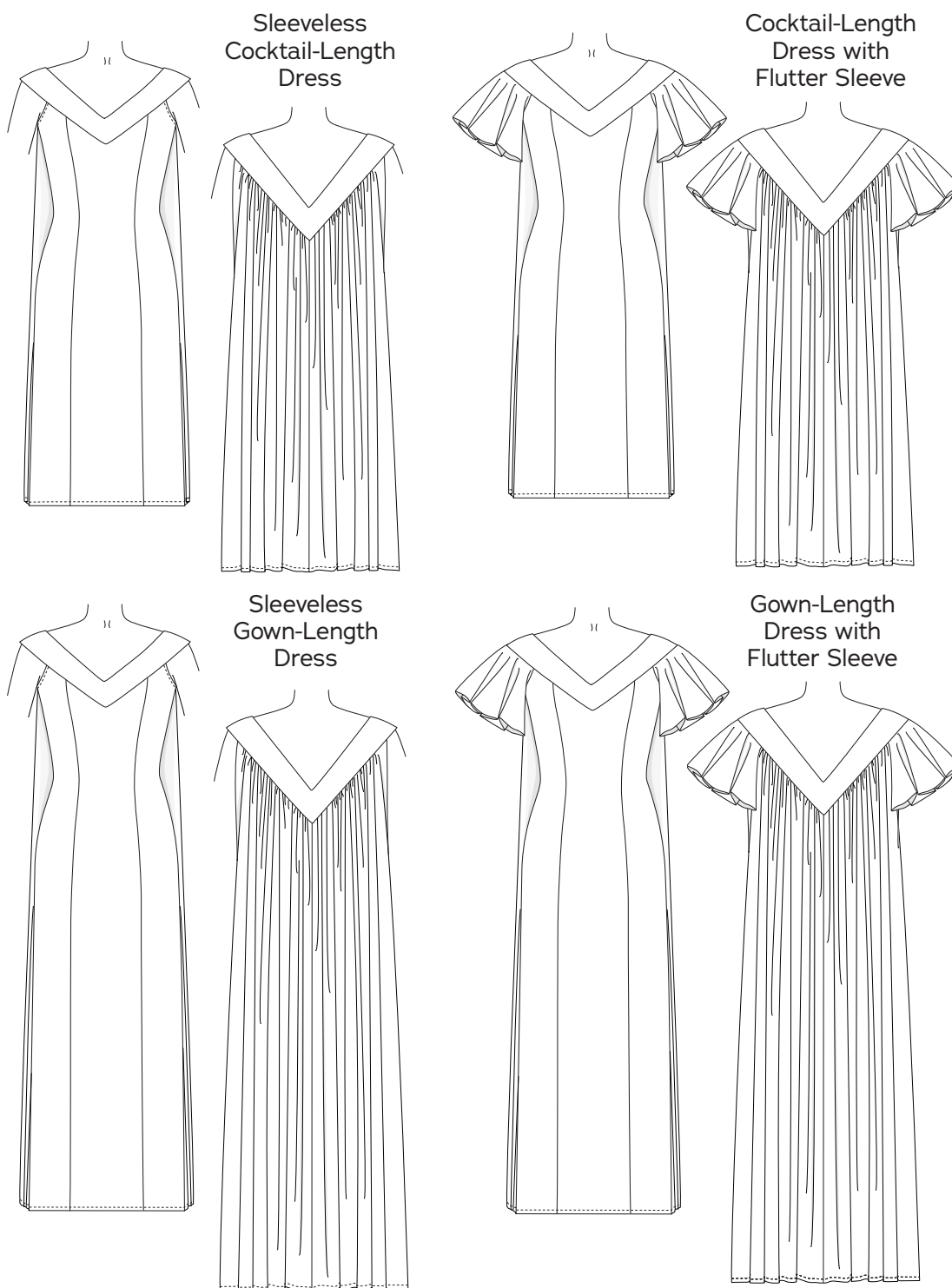
DESIGN YOUR DRESS



Use this worksheet to sketch, plan, and estimate yardage for your dress!

OPTION	PIECE #s	YARDAGE	FABRIC
Dress length			
Sleeves			
NOTES:			

DESIGN OPTIONS

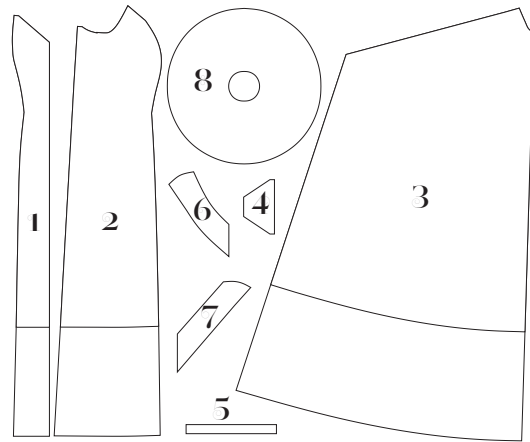


FABRIC NOTES

See specific fabric recommendations on page 2. This dress was designed for woven fabrics with drape. It is not recommended to use a knit fabric for this pattern.

REQUIRED YARDAGE & CUTTING LAYOUTS

- 1. Dress Front**
Cut 1 fabric on fold
- 2. Dress Side Front**
Cut 2 fabric
- 3. Dress Back**
Cut 2 fabric
- 4. Inner Belt**
Cut 4 fabric, 2 underlining
- 5. Armhole Binding (for Sleeveless Dress only)**
Cut 2 fabric
- 6. Front Yoke**
Cut 2 fabric on fold, 1 underlining on fold
- 7. Back Yoke**
Cut 2 fabric on fold, 1 underlining on fold
- 8. Flutter Sleeve**
Cut 2 fabric, 2 lining



KEY TO LAYOUTS



Right side of
pattern piece



Wrong side of
pattern piece

Be sure to note whether the pieces are cut on a double or single layer of fabric. For a double layer, there will be a note indicating FOLD on the layout.

Note: all pattern pieces are shown in a “without nap” layout. You may need additional yardage for directional prints, stripes, plaids, and other prints that need to be matched across seamlines.