

CONTENTS

INSTRUCTIONS

MariaDress2-20Instructions.pdf

- Introduction** [4](#)
- Design Options [6](#)
- Design Your Dress [7](#)
- Pattern Piece List [8](#)
- Required Yardage & Cutting Layouts [8](#)
- A Guide to Fitting Your Dress [9](#)
- Finished Measurements Chart [10](#)

- Sewing Instructions** [12](#)
- Before Sewing [13](#)
- Bodice [14](#)
- Collar [15](#)
- Facing [16](#)
- Three-Quarter Length or Short Sleeves [17](#)
- Lantern Sleeves [18](#)
- Skirt [19](#)
- Zipper [21](#)
- Belt [22](#)
- Finishing [22](#)

- Take Your Dress to the Next Level** [23](#)

- Appendix** [26](#)
- Glossary [27](#)
- Pattern Piece Location Guide [28](#)
- Pattern Pieces Tiling Map [29](#)

MariaDress2-20PatternTiled.pdf

See the Pattern Piece Location Guide for each pattern piece's page number to print them individually.

AO SHEETS

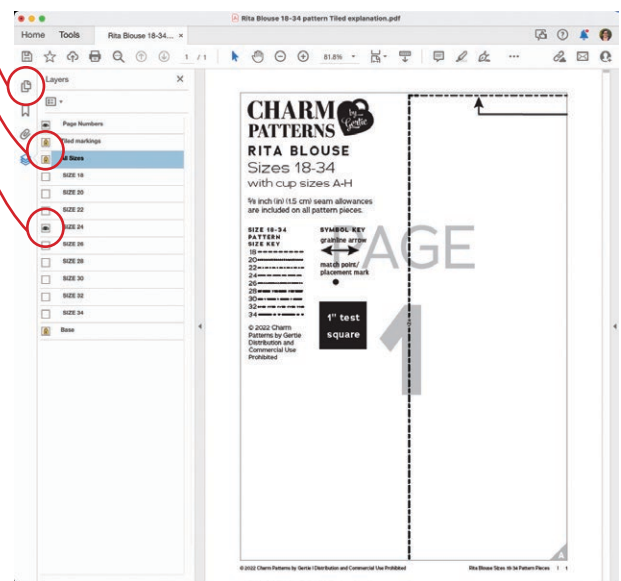
MariaDress2-20PatternAO.pdf

HOW TO USE THIS PATTERN

The pattern pieces are tiled so you can print them on Letter (8½" x 11") or A4 size paper. You can also send the A0 pattern sheet PDF to a local or online printer (like theplottedpattern.com) to print on large sheets (36" x 48" for U.S. or AO for international).

This pattern includes size layers. To get the best results, open either the Tiled or A0 pattern pieces PDF in [Acrobat Reader](#).

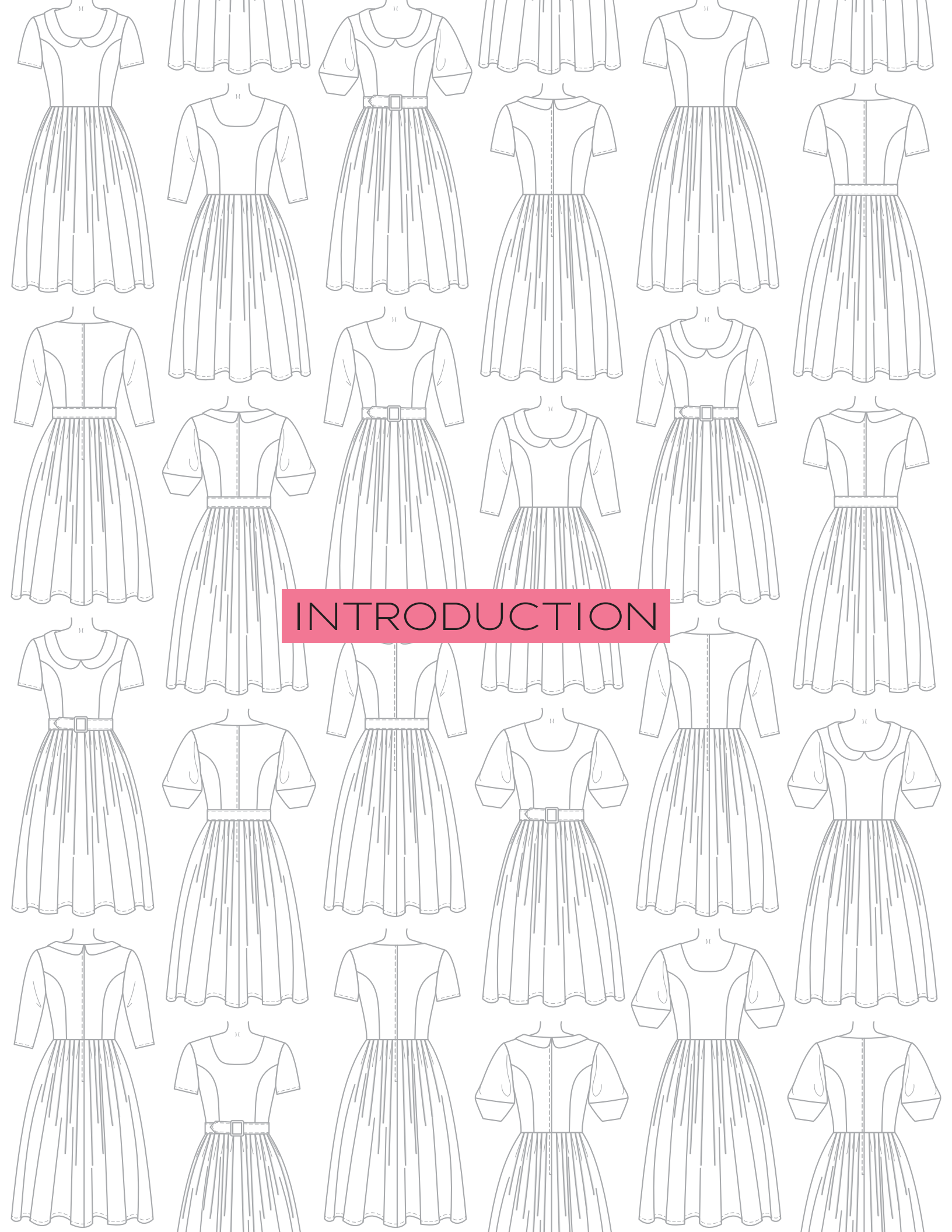
- Open the Layers Palette (View>Show/Hide>Navigation Panes>Layers) and hide all of the layer(s) except for the ones you want to print by clicking on the eye icon.
- The All Sizes and Tiled Markings layers have general pattern information and will always print.
- You may choose to turn off the Page Numbers layer. The page numbers will still appear at the bottom of each page in the footer.



WORKING WITH THE TILED PIECES

Go to File>Print and change the page range to the pages you need for the pieces you've chosen (see Pattern Pieces Printing Index). Make sure the Page Sizing settings to 100% or Actual Size. Test this after printing by measuring the 1" test box on the first page of the pattern pieces.

Fold back or cut off the page margins on each page as marked. Match the letters in the gray corner diamonds. Tape the pages together, butting up the folded or cut page edges with the gray margin lines.



INTRODUCTION



“**W**here did you get that dress?”
“I made it.”
Saying those three little words is one of the best feelings in the world!

And with the Maria Dress—a classic Charm Patterns dress perfect for sewists of all experience levels—you’ll be saying them in no time!

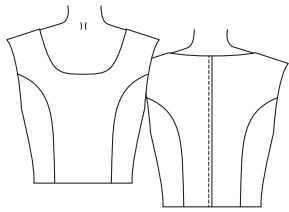
The Maria Dress features a vintage-inspired princess-seamed bodice with a scoop neckline, an optional collar, three different sleeve variations, a full pleated skirt, and matching fabric belt.

Learning to sew can be challenging, which is why I’ve always wanted to design a beginner-friendly sewing pattern with a classic Charm silhouette. If you can sew a straight stitch on your sewing machine, you can make this dress! This pattern comes with simple step-by-step illustrated instructions and a companion sew-along video to explain every step along the way.

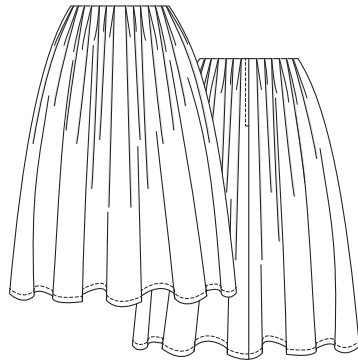
Before long, you’ll be wearing your new Maria Dress with pride, and you’ll be able to take the skills you learned here to create a closet full of garments that you not only love to wear but that are designed to fit your unique body and style!

xoxo, Gertie

DESIGN OPTIONS



Bodice with princess seams



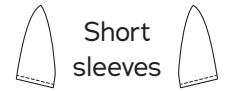
Full pleated skirt



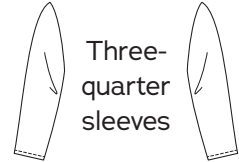
Peter Pan collar



Fabric-covered belt



Short sleeves



Three-quarter sleeves



Lantern sleeves

12 POSSIBLE DRESS COMBINATIONS!

Here are a couple to inspire you...

Short sleeve dress with belt



Three-quarter sleeve dress with collar



Lantern sleeve dress with belt



DESIGN YOUR DRESS

Use this worksheet to sketch, plan, and estimate yardage for your Maria Dress!



OPTION	PIECE #s	YARDAGE	FABRIC
Bodice & Skirt			
Sleeves			
Collar			
Belt			
NOTES:			