

# CHARM PATTERNS

## CHARM DOUBLE CIRCLE SKIRT

Sizes 18-34

5/8 inch (1.5 cm) seam allowances are included on all pattern pieces.

Page 1 of 4

### PAGE 1 PATTERN PIECES

- 1 Skirt Front
- 2 Skirt Back
- 3 Waistband

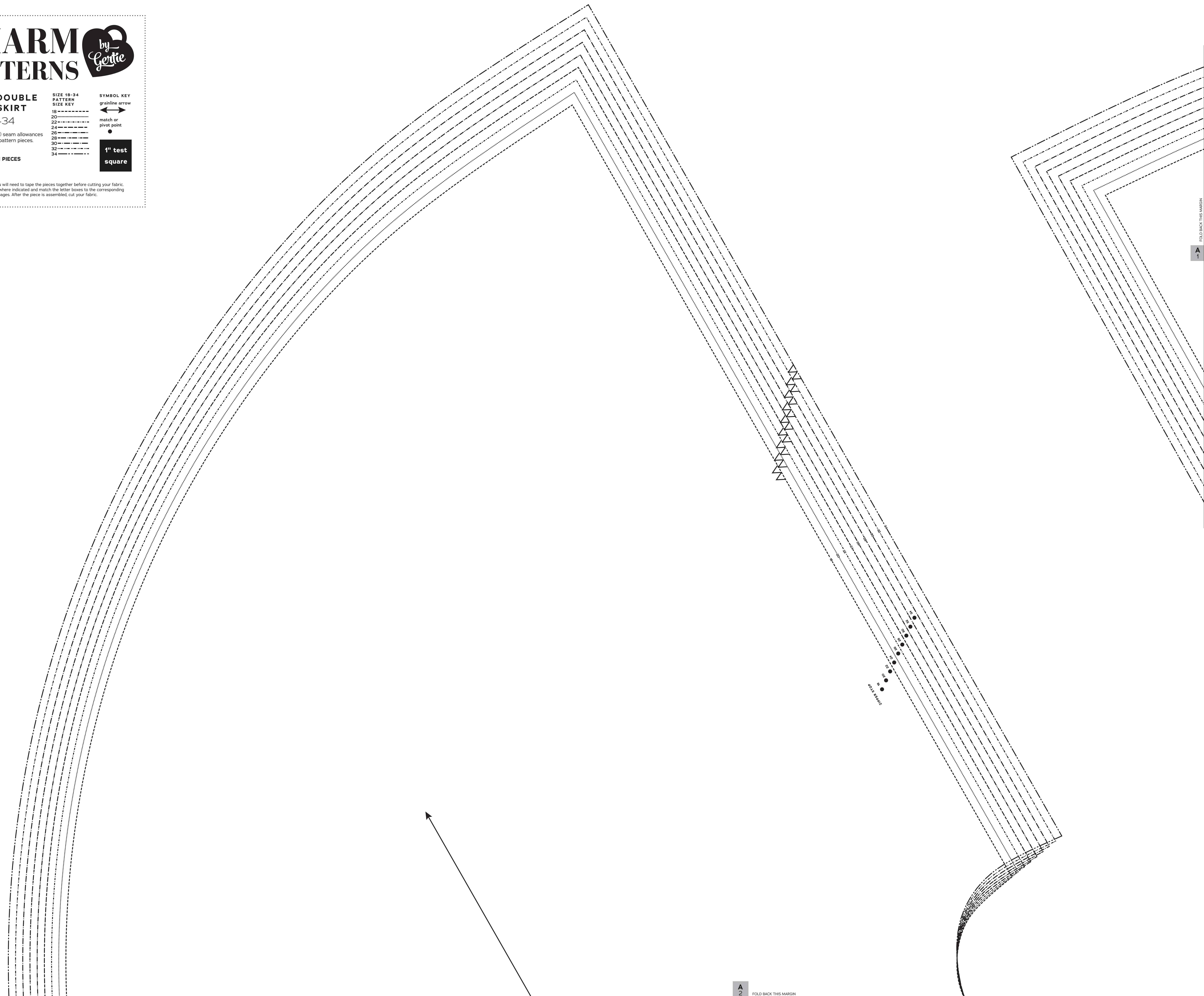
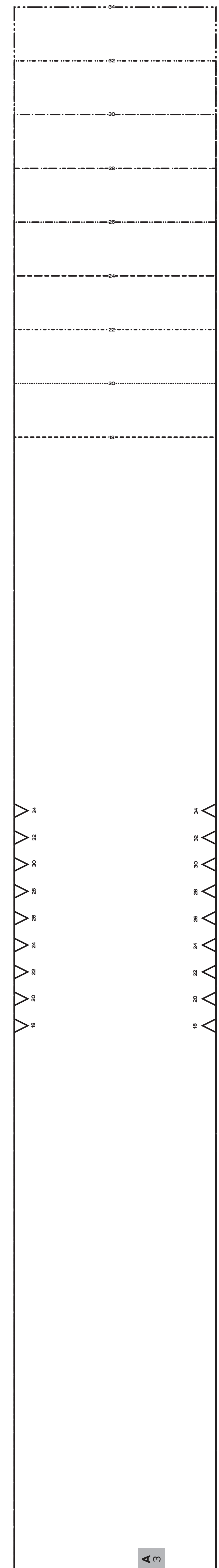
SIZE 18-34 PATTERN SIZE KEY

18	-----
20	-----
22	-----
24	-----
26	-----
28	-----
30	-----
32	-----
34	-----

SYMBOL KEY  
 grainline arrow  
 match or pivot point

1" test square

To use this pattern, you will need to tape the pieces together before cutting your fabric. Fold back the margins where indicated and match the letter boxes to the corresponding pieces from the other pages. After the piece is assembled, cut your fabric.



A 3

A 2  
FOLD BACK THIS MARGIN

FOLD BACK THIS MARGIN  
A 1



# CHARM PATTERNS

## CHARM DOUBLE CIRCLE SKIRT

Sizes 18-34

5/8 inch (in) (1.5 cm) seam allowances are included on all pattern pieces.

Page 2 of 4

PAGE 2 PATTERN PIECES  
1 Skirt Front

SIZE 18-34 PATTERN SIZE KEY
18
20
22
24
26
28
30
32
34

SYMBOL KEY  
grainline arrow  
match or pivot point

1" test square

To use this pattern, you will need to tape the pieces together before cutting your fabric. Fold back the margins where indicated and match the letter boxes to the corresponding pieces from the other pages. After the piece is assembled, cut your fabric.

A  
1

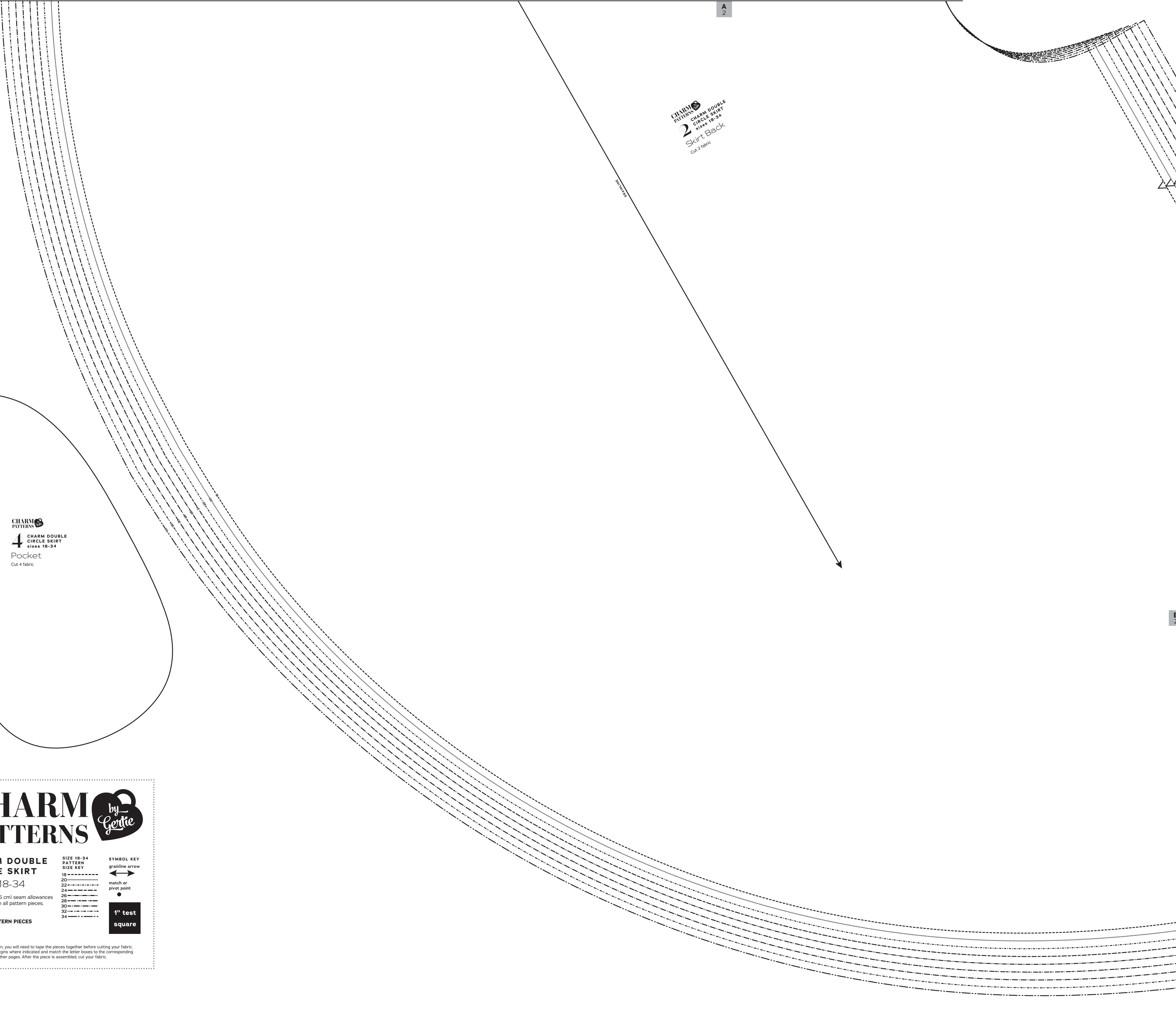
CHARM PATTERNS  DOUBLE CIRCLE SKIRT Sizes 18-34  
1 Skirt Front  
Cut 2 fabric

B  
1 FOLD BACK THIS MARGIN

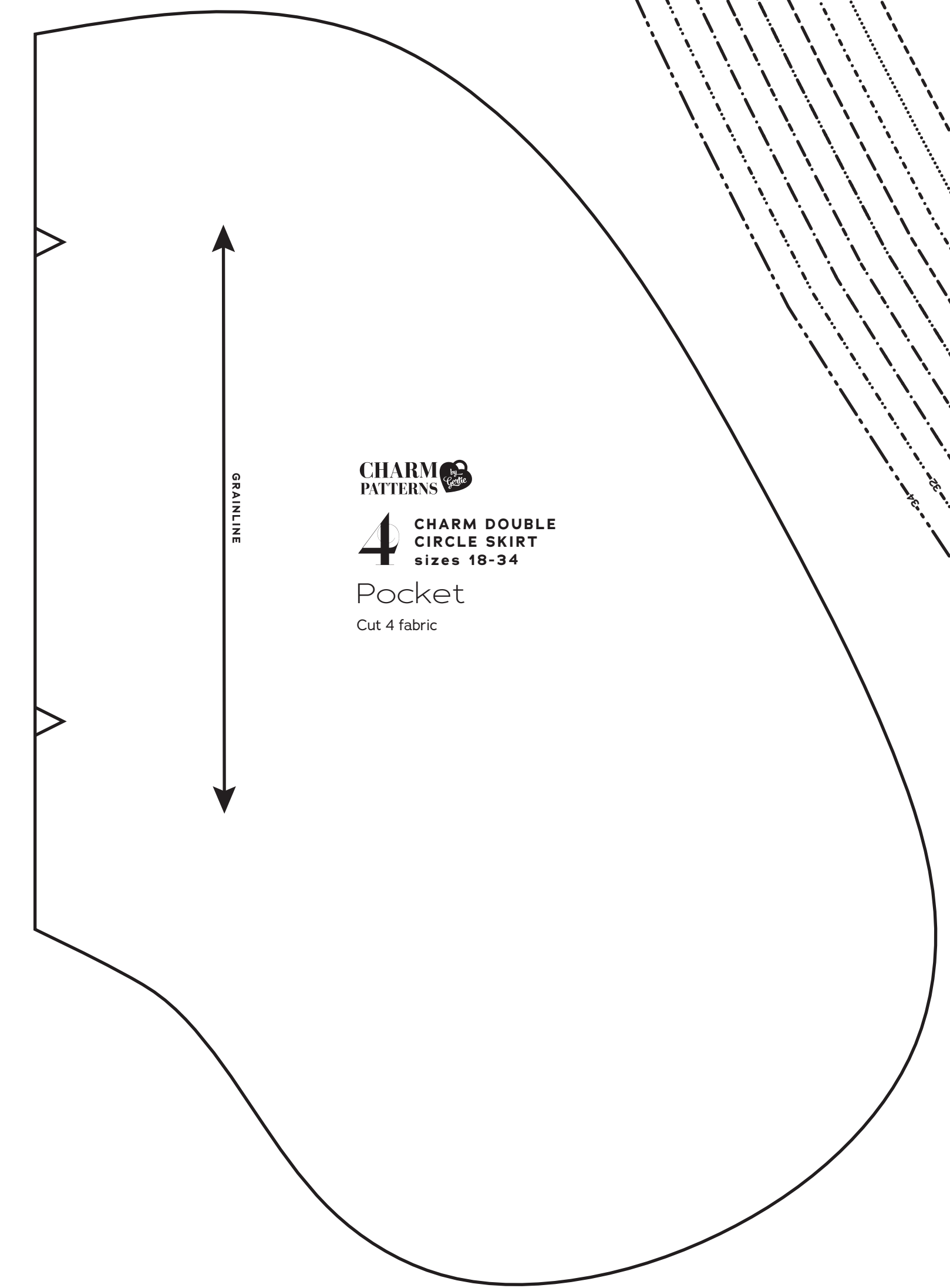


CHARM PATTERNS  
3 CHARM DOUBLE  
CIRCLE SKIRT  
SIZES 18-34  
Waistband  
Cut 1 fabric, 1 interfacing

CHARM PATTERNS  
2 CHARM DOUBLE  
CIRCLE SKIRT  
SIZES 18-34  
Skirt Back  
Cut 2 fabric



GRAINLINE



CHARM PATTERNS  
4 CHARM DOUBLE  
CIRCLE SKIRT  
SIZES 18-34  
Pocket  
Cut 4 fabric

UNDERLAP NOTCH

# CHARM PATTERNS *by Gertie*

## CHARM DOUBLE CIRCLE SKIRT SIZES 18-34

5/8 inch (1.5 cm) seam allowances are included on all pattern pieces.  
Page 3 of 4  
**PAGE 3 PATTERN PIECES**  
2 Skirt Back  
3 Waistband  
4 Pocket

**SIZE 18-34 PATTERN SIZE KEY**

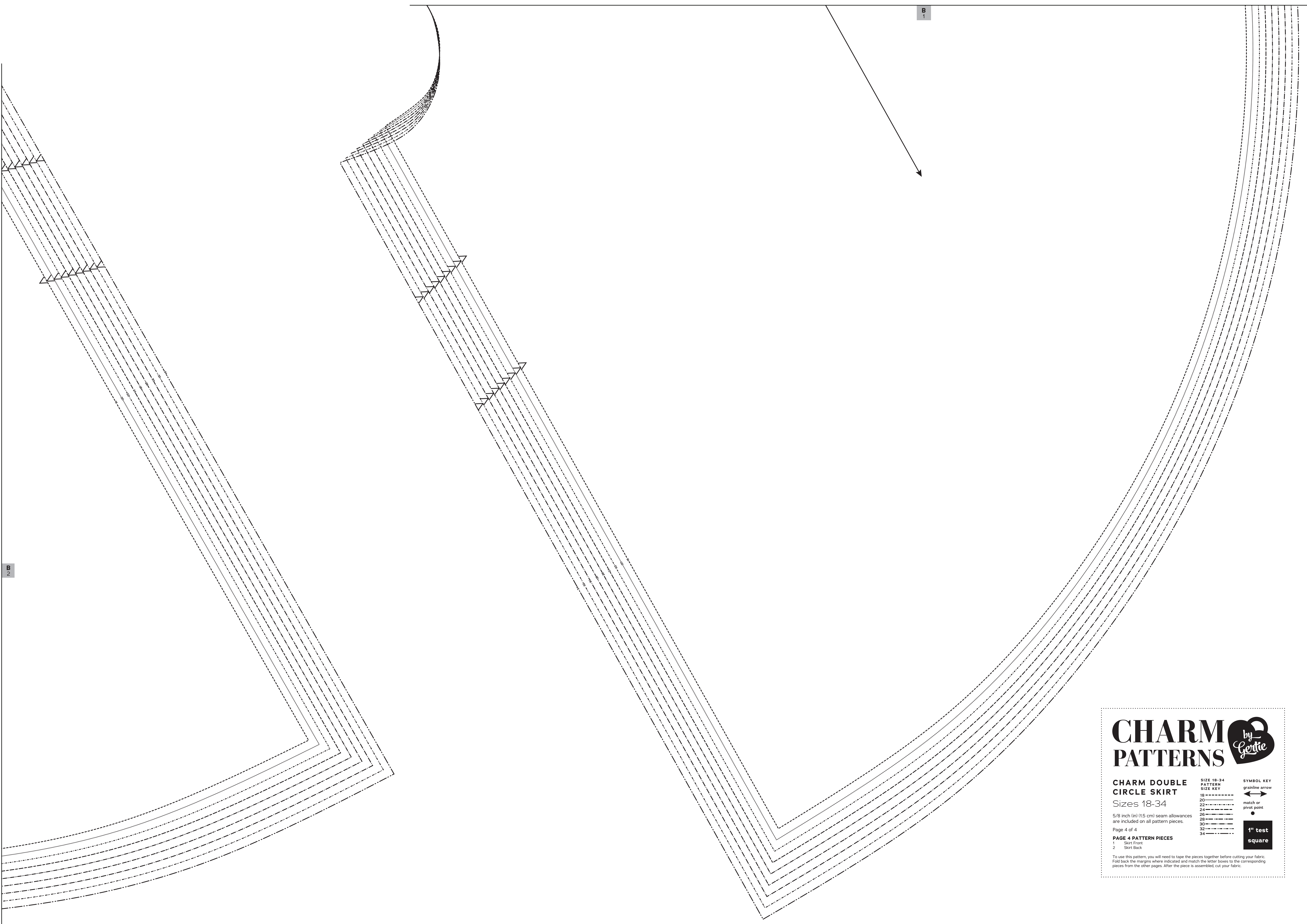
18	-----
20	-----
22	-----
24	-----
26	-----
28	-----
30	-----
32	-----
34	-----

**SYMBOL KEY**  
grainline arrow  
match or pivot point

**1" test square**

To use this pattern, you will need to tape the pieces together before cutting your fabric. Fold back the margins where indicated and match the letter boxes to the corresponding pieces from the other pages. After the piece is assembled, cut your fabric.





0.0

**CHARM**   
**PATTERNS**

**CHARM DOUBLE CIRCLE SKIRT**  
 Sizes 18-34

5/8 inch (1.5 cm) seam allowances are included on all pattern pieces.

Page 4 of 4

**PAGE 4 PATTERN PIECES**  
 1 Skirt Front  
 2 Skirt Back

**SIZE 18-34 PATTERN SIZE KEY**

18	-----
20	-----
22	-----
24	-----
26	-----
28	-----
30	-----
32	-----
34	-----

**SYMBOL KEY**  
 grainline arrow  
 match or pivot point  
 1" test square

To use this pattern, you will need to tape the pieces together before cutting your fabric. Fold back the margins where indicated and match the letter boxes to the corresponding pieces from the other pages. After the piece is assembled, cut your fabric.