

CHARM PATTERNS



MORTICIA GOWN

A Bryant Gown
Expansion pattern

Sizes 2-20

5/8 inch (1.5 cm) seam allowances
are included on all pattern pieces.

Page 1 of 4

PAGE 1 PATTERN PIECES

MG5 Sleeve

SIZES 2-20

PATTERN

SIZE KEY

2	-----
4	-----
6	-----
8	-----
10	-----
12	-----
14	-----
16	-----
18	-----
20	-----

SYMBOL KEY

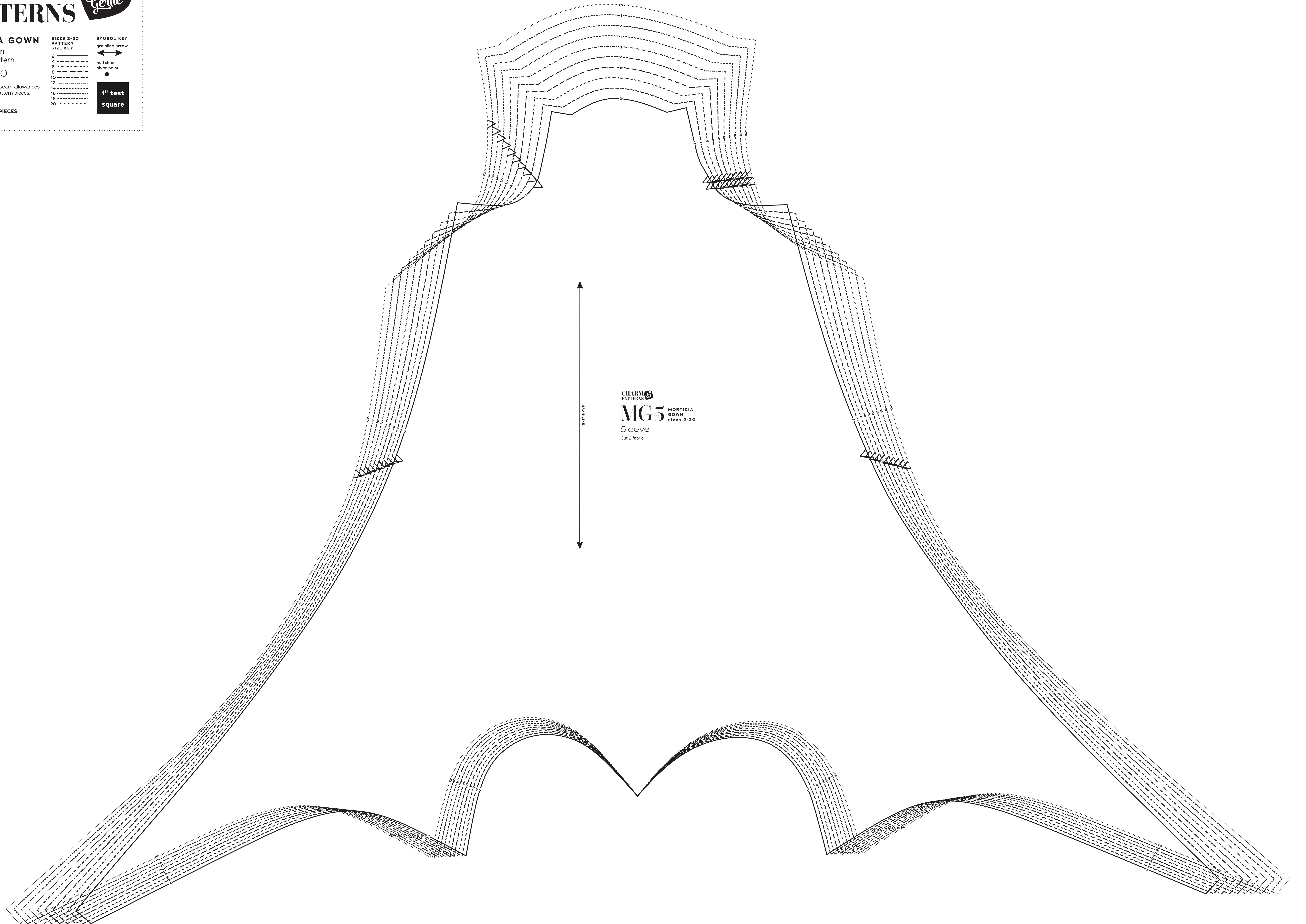
grainline arrow



match or pivot point



1" test square



CHARM PATTERNS

MG5

MORTICIA GOWN

Sleeve

Cut 2 fabric

SIZES 2-20

CHARM PATTERNS



MORTICIA GOWN

A Bryant Gown
Expansion pattern

Sizes 2-20

5/8 inch (in) (1.5 cm) seam allowances
are included on all pattern pieces.

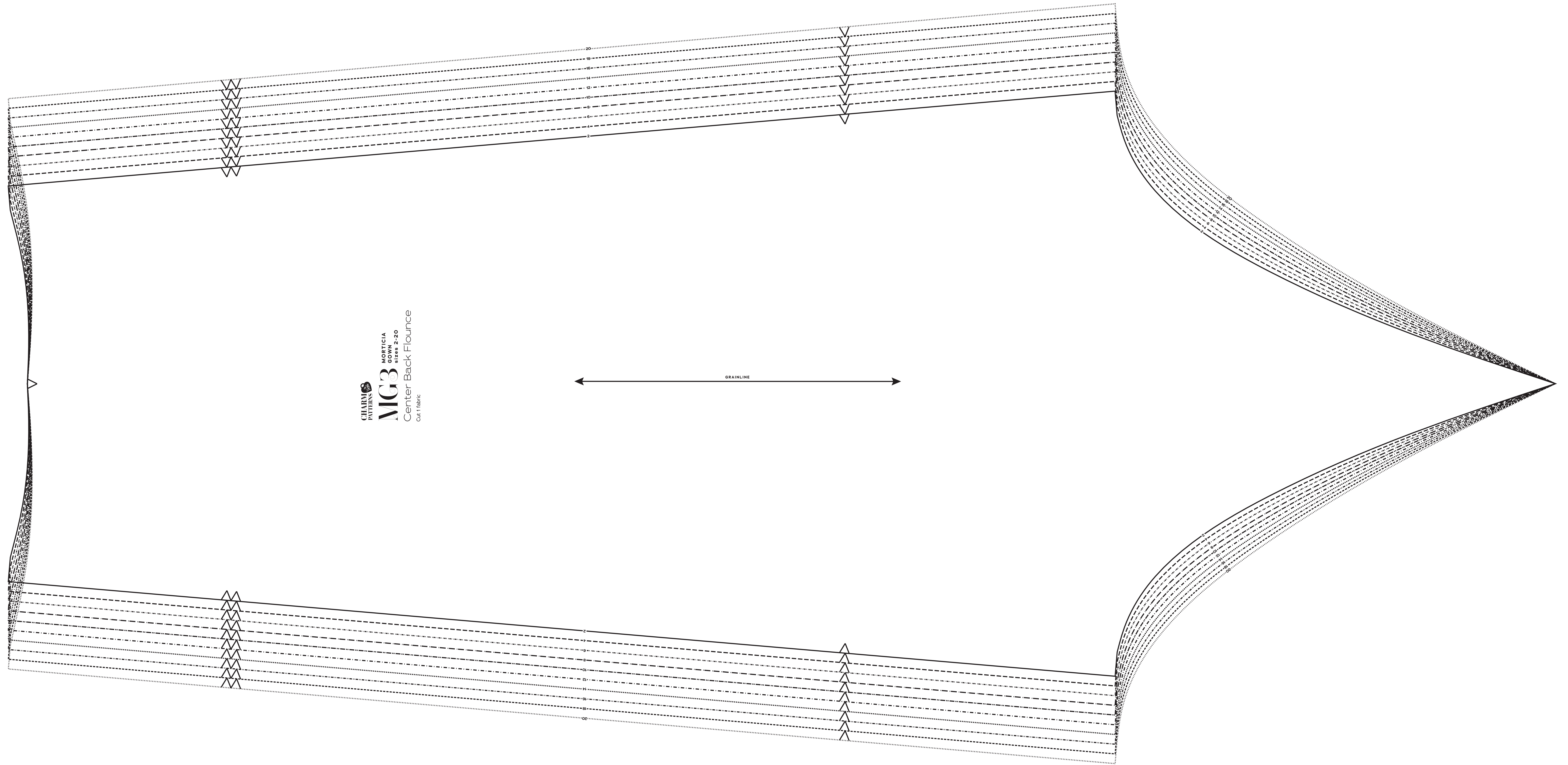
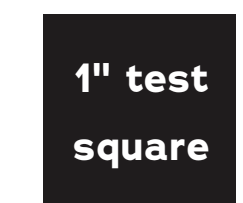
Page 2 of 4

PAGE 2 PATTERN PIECES
MG3 Center Back Flounce

**SIZES 2-20
PATTERN
SIZE KEY**

2	-----
4	-----
6	-----
8	-----
10	-----
12	-----
14	-----
16	-----
18	-----
20	-----

SYMBOL KEY
grainline arrow
match or
pivot point



CHARM PATTERNS



MORTICIA GOWN

A Bryant Gown
Expansion pattern

Sizes 2-20

5/8 inch (1.5 cm) seam allowances
are included on all pattern pieces.

Page 3 of 4

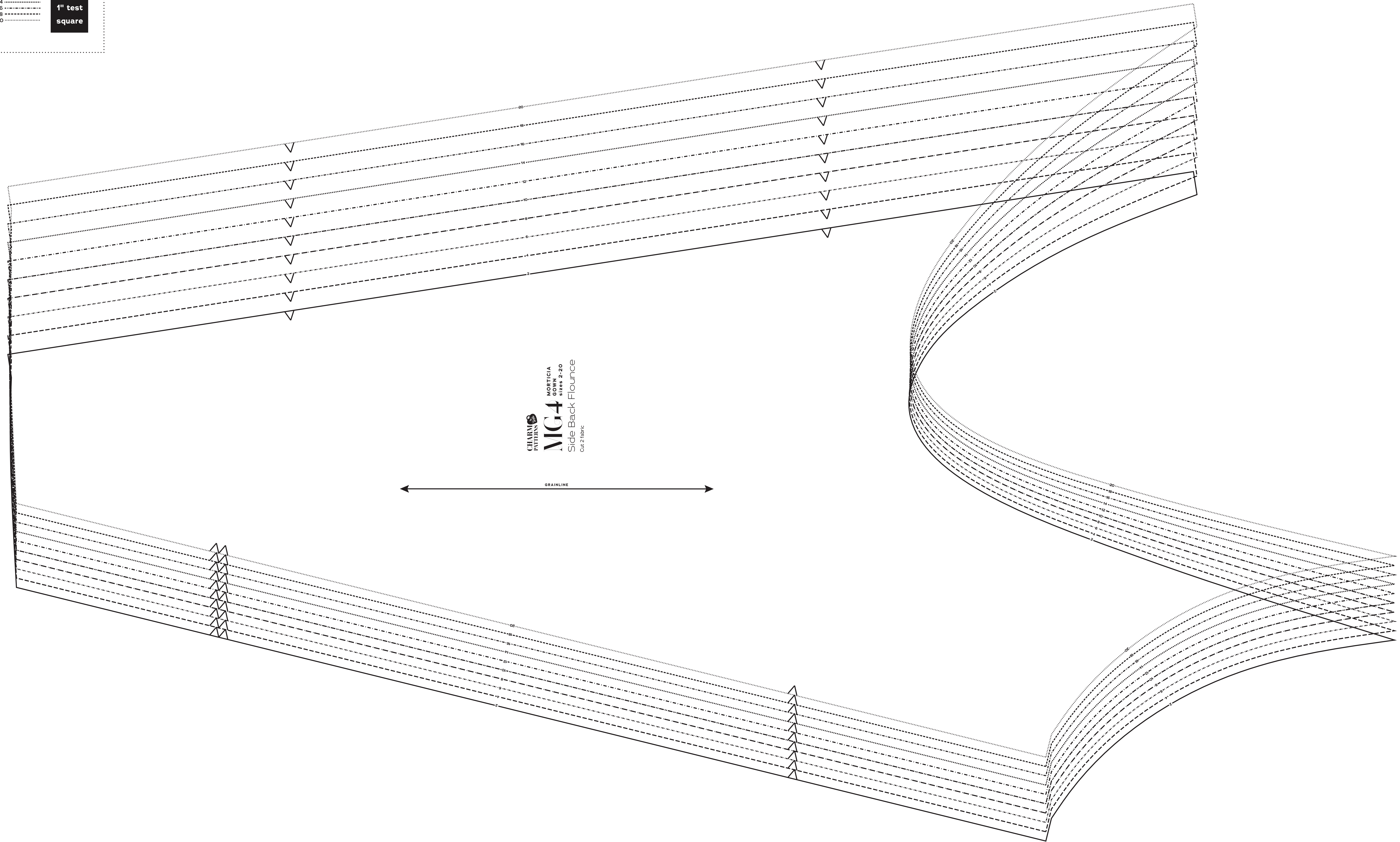
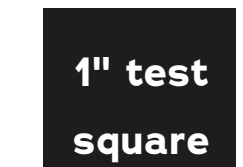
PAGE 3 PATTERN PIECES

MG4 Side Back Flounce

SIZES 2-20
PATTERN
SIZE KEY

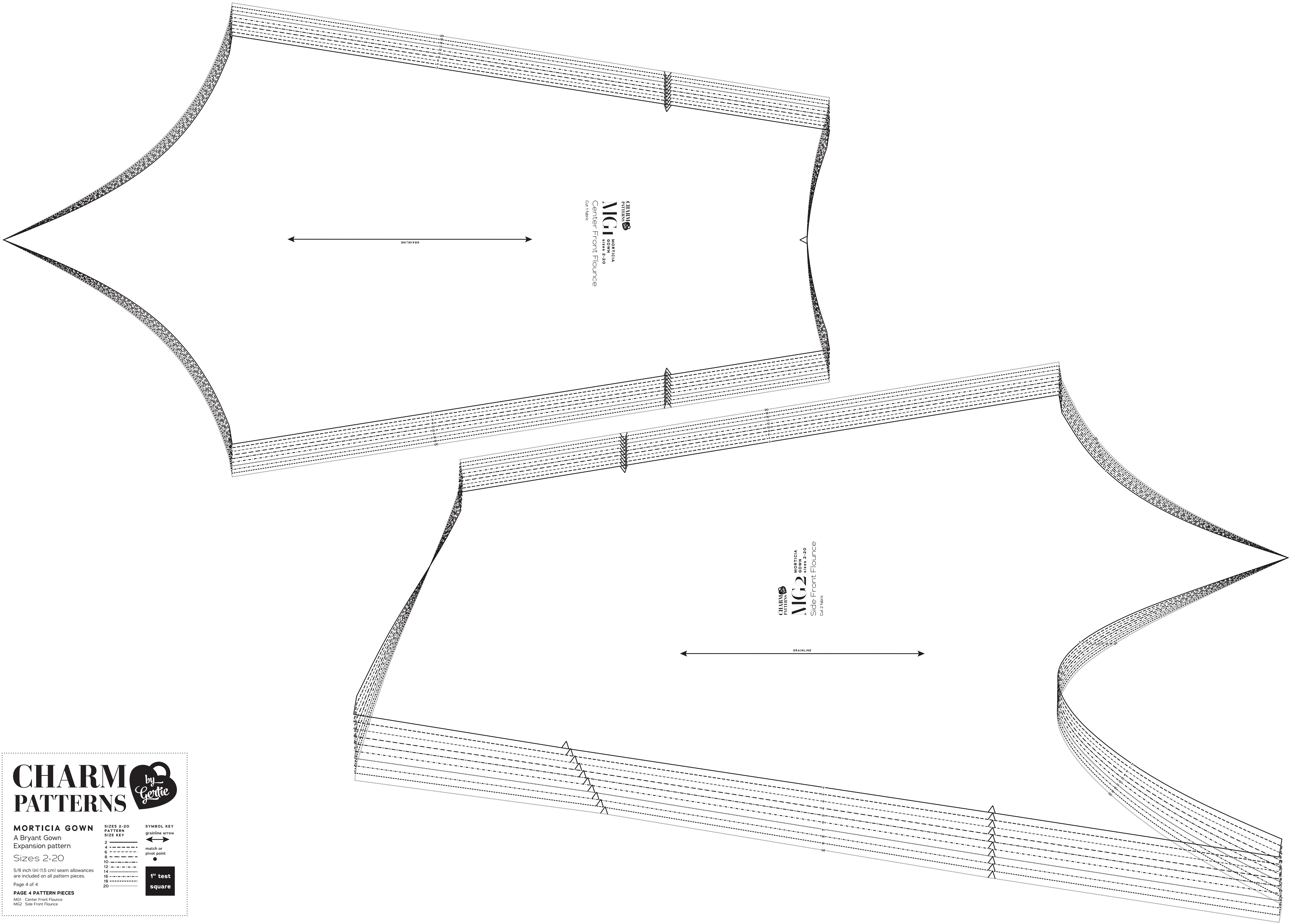
2	-----
4	-----
6	-----
8	-----
10	-----
12	-----
14	-----
16	-----
18	-----
20	-----

SYMBOL KEY
grainline arrow
match or
pivot point



CHARM PATTERNS
MORTICIA GOWN
MG4
Side Back Flounce
Cut 2/fabric

GRAINLINE



CHARM PATTERNS
MG1 MORTICIA GOWN SIZES 2-20
 Center Front Flounce
 Cut 1/layer

CHARM PATTERNS
MG2 MORTICIA GOWN SIZES 2-20
 Side Front Flounce
 Cut 2/layers

CHARM PATTERNS



MORTICIA GOWN
 A Bryant Gown
 Expansion pattern
 Sizes 2-20

5/8 inch (in) (1.5 cm) seam allowances are included on all pattern pieces.
 Page 4 of 4

SIZES 2-20 PATTERN SIZE KEY

2	-----
4	-----
6	-----
8	-----
10	-----
12	-----
14	-----
16	-----
18	-----
20	-----

SYMBOL KEY
 grainline arrow
 match or pivot point



PAGE 4 PATTERN PIECES
 MG1 Center Front Flounce
 MG2 Side Front Flounce