

CHARM PATTERNS



MORTICIA GOWN

A Bryant Gown
Expansion pattern

Sizes 18-34

5/8 inch (in) (1.5 cm) seam allowances
are included on all pattern pieces.

Page 1 of 4

PAGE 1 PATTERN PIECES

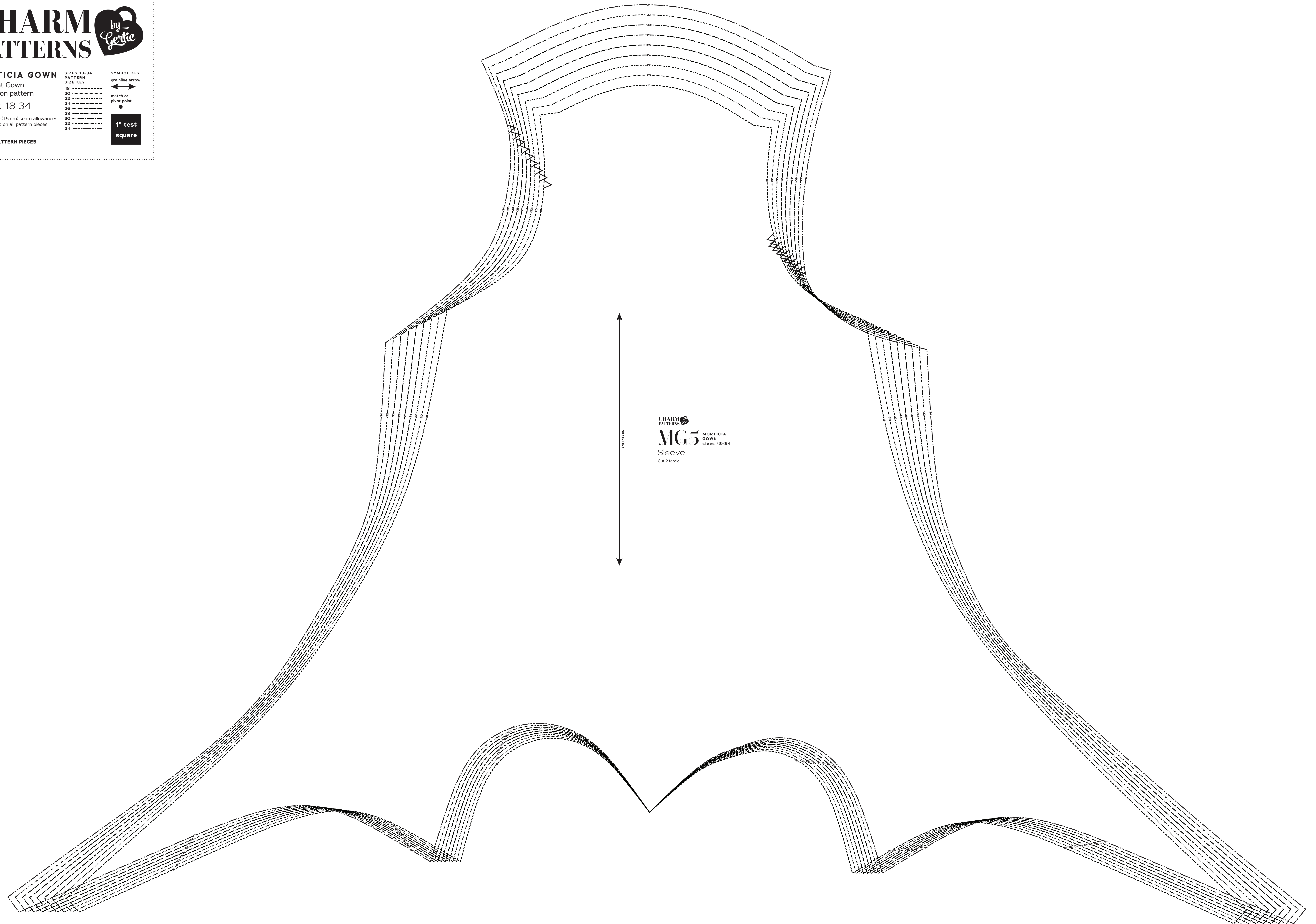
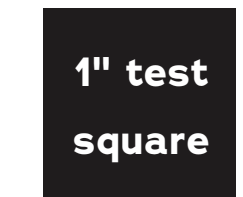
MG5 Sleeve

SIZES 18-34 PATTERN SIZE KEY

18	-----
20	-----
22	-----
24	-----
26	-----
28	-----
30	-----
32	-----
34	-----

SYMBOL KEY

grainline arrow
match or
pivot point



CHARM PATTERNS
MG5 MORTICIA GOWN
Sleeve
Cut 2 fabric

CHARM PATTERNS



MORTICIA GOWN

A Bryant Gown
Expansion pattern

Sizes 18-34

5/8 inch (1.5 cm) seam allowances
are included on all pattern pieces.

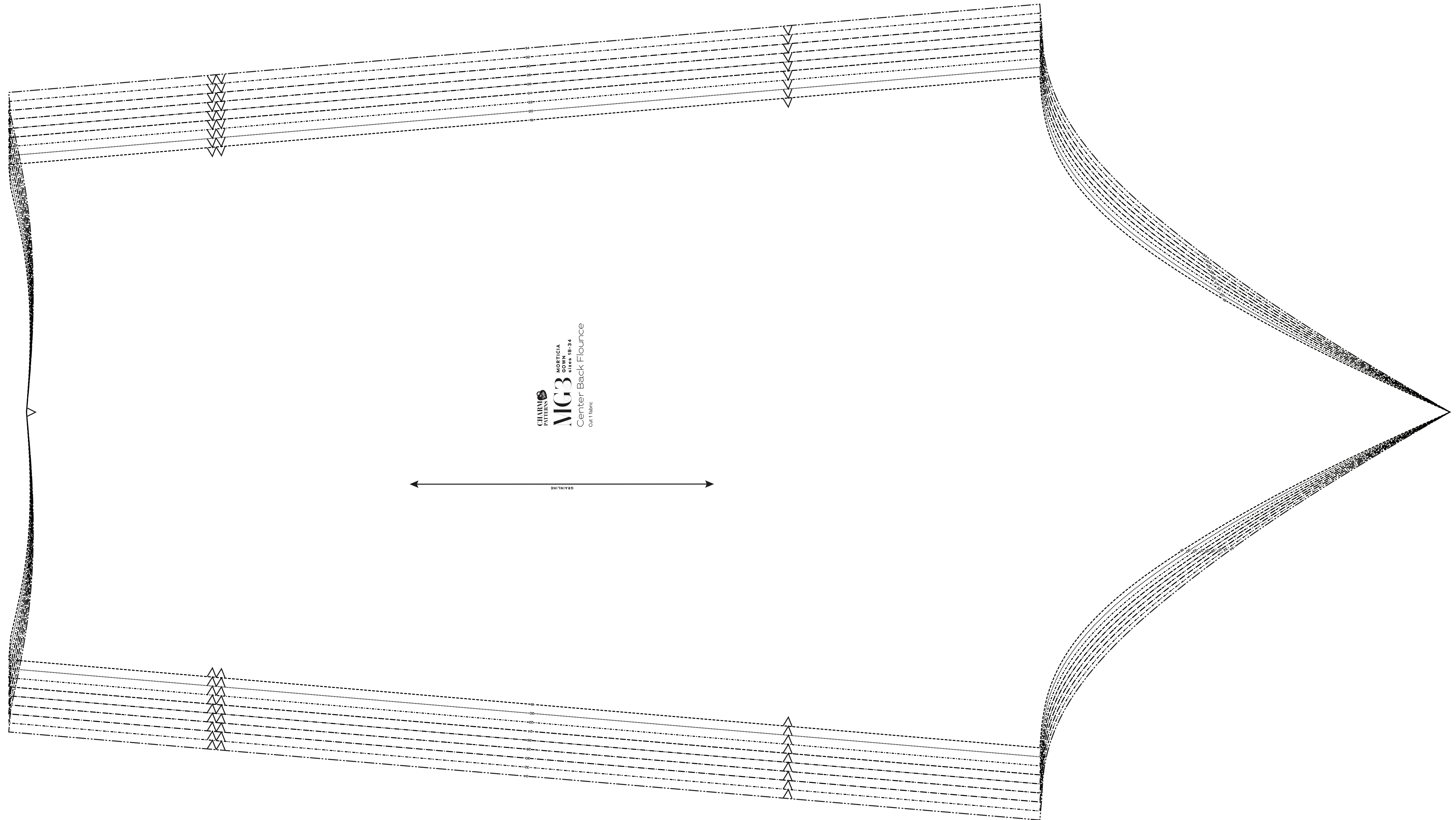
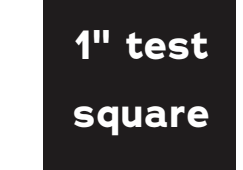
Page 2 of 4

PAGE 2 PATTERN PIECES
MG3 Center Back Flounce

SIZES 18-34
PATTERN
SIZE KEY

18	-----
20	-----
22	-----
24	-----
26	-----
28	-----
30	-----
32	-----
34	-----

SYMBOL KEY
grainline arrow
match or
pivot point



CHARM PATTERNS



MORTICIA GOWN

A Bryant Gown
Expansion pattern

Sizes 18-34

5/8 inch (1.5 cm) seam allowances
are included on all pattern pieces.

Page 3 of 4

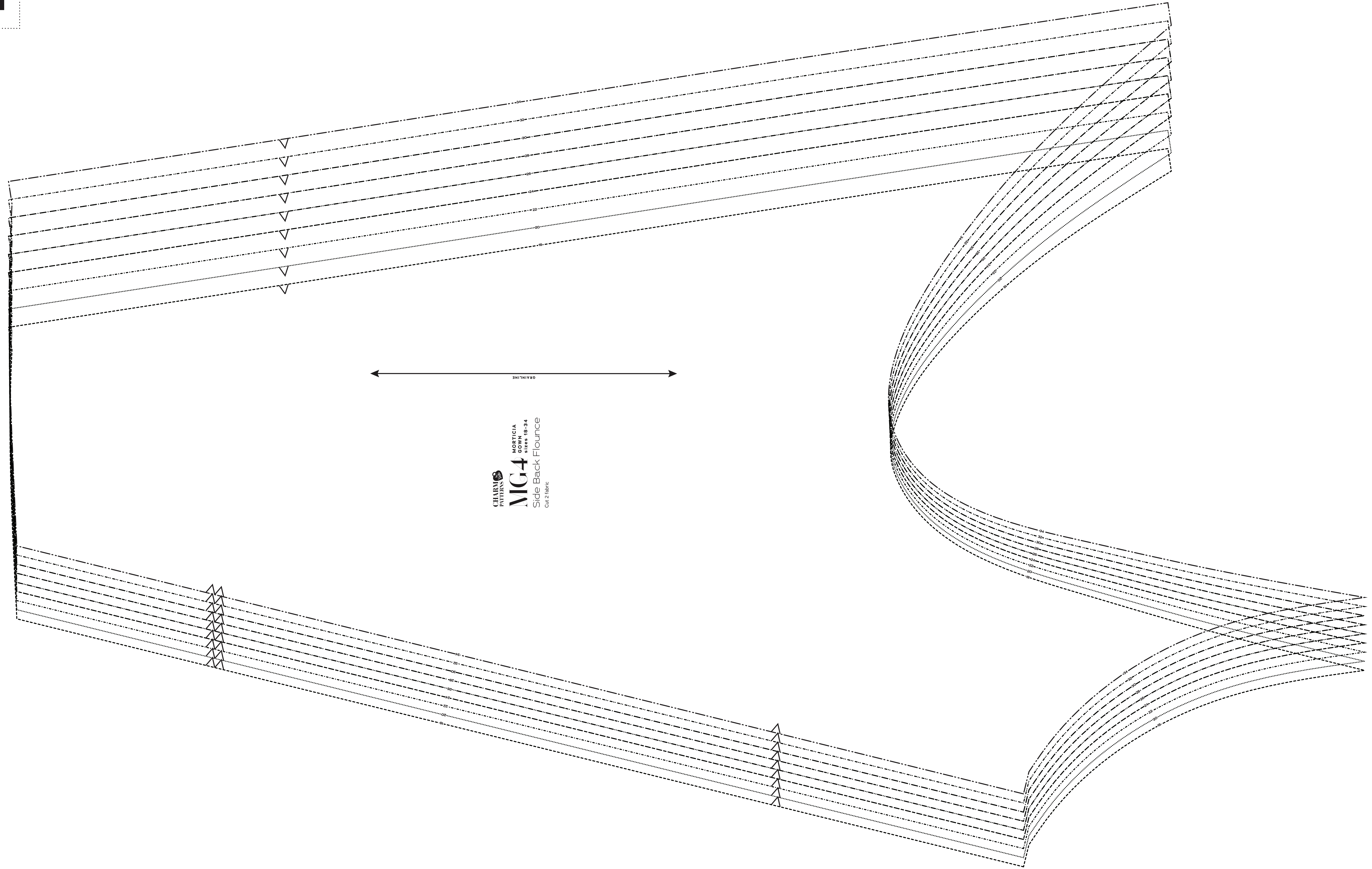
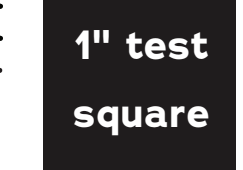
PAGE 3 PATTERN PIECES
MG4 Side Back Flounce

SIZES 18-34 PATTERN SIZE KEY

18	-----
20	-----
22	-----
24	-----
26	-----
28	-----
30	-----
32	-----
34	-----

SYMBOL KEY

- grainline arrow
- match or pivot point



CHARM PATTERNS
MORTICIA GOWN
MG4
Side Back Flounce
Cut 2 fabric

CHARM PATTERNS



MORTICIA GOWN

A Bryant Gown
Expansion pattern

Sizes 18-34

5/8 inch (1.5 cm) seam allowances
are included on all pattern pieces.

Page 4 of 4

PAGE 4 PATTERN PIECES

MG1 Center Front Flounce

MG2 Side Front Flounce

SIZES 18-34

PATTERN

SIZE KEY

18

20

22

24

26

28

30

32

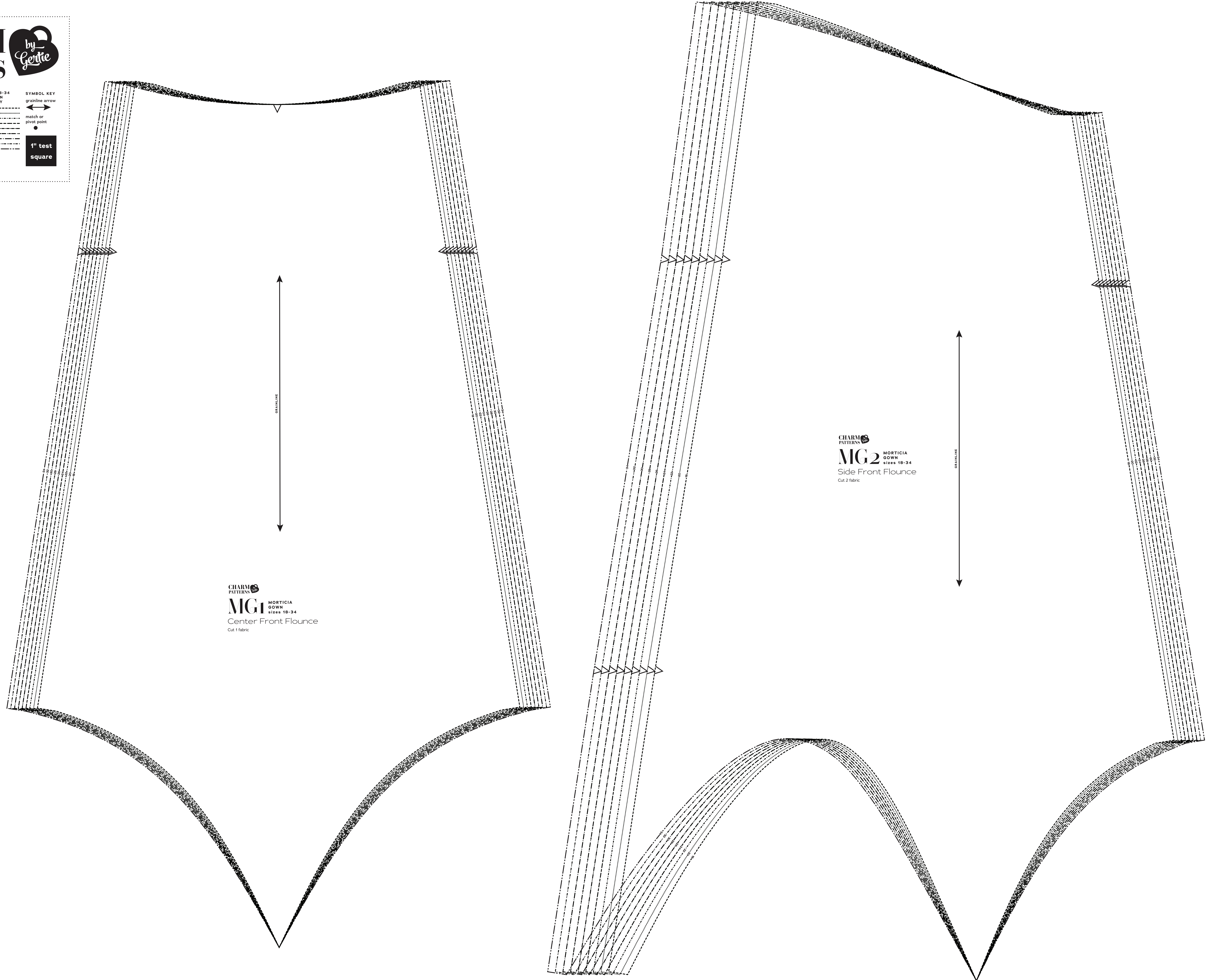
34

SYMBOL KEY

grainline arrow

match or pivot point

1" test square



CHARM PATTERNS
MG1 MORTICIA GOWN
sizes 18-34
Center Front Flounce
Cut 1 fabric

CHARM PATTERNS
MG2 MORTICIA GOWN
sizes 18-34
Side Front Flounce
Cut 2 fabric