

CHARM PATTERNS *by Gerie*

CHARM CIRCLE SKIRT

Sizes 18-34

5/8 inch (1.5 cm) seam allowances are included on all pattern pieces.

Page 1 of 3

PAGE 1 PATTERN PIECES

- 2 Skirt Back
- 3 Waistband

SIZE 18-34
PATTERN
SIZE KEY

18	-----
20	-----
22	-----
24	-----
26	-----
28	-----
30	-----
32	-----
34	-----

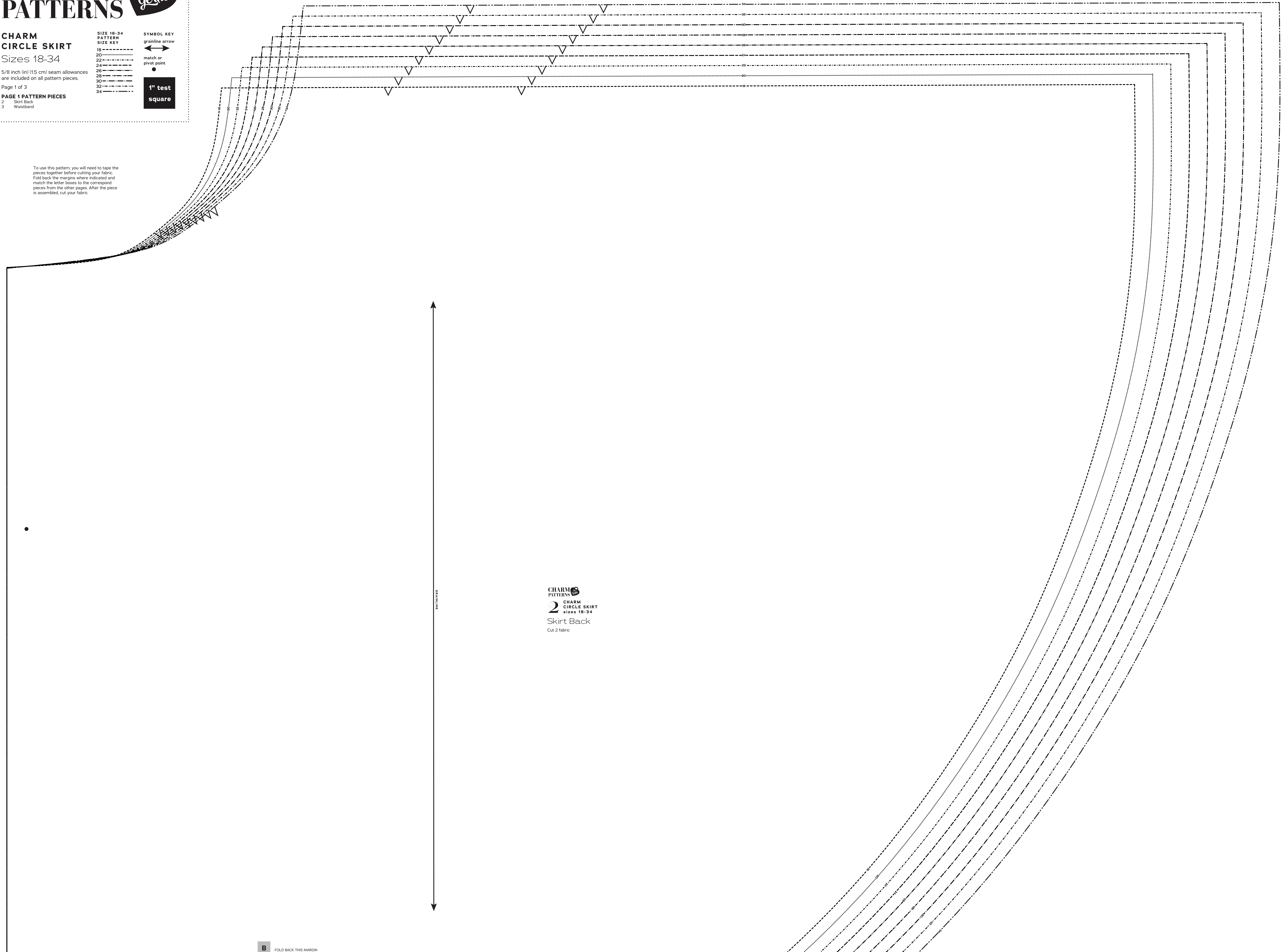
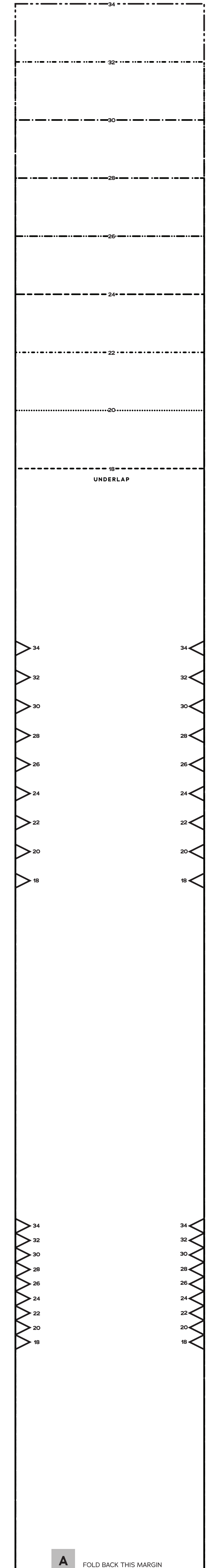
SYMBOL KEY

grainline arrow

match or pivot point

4" test square

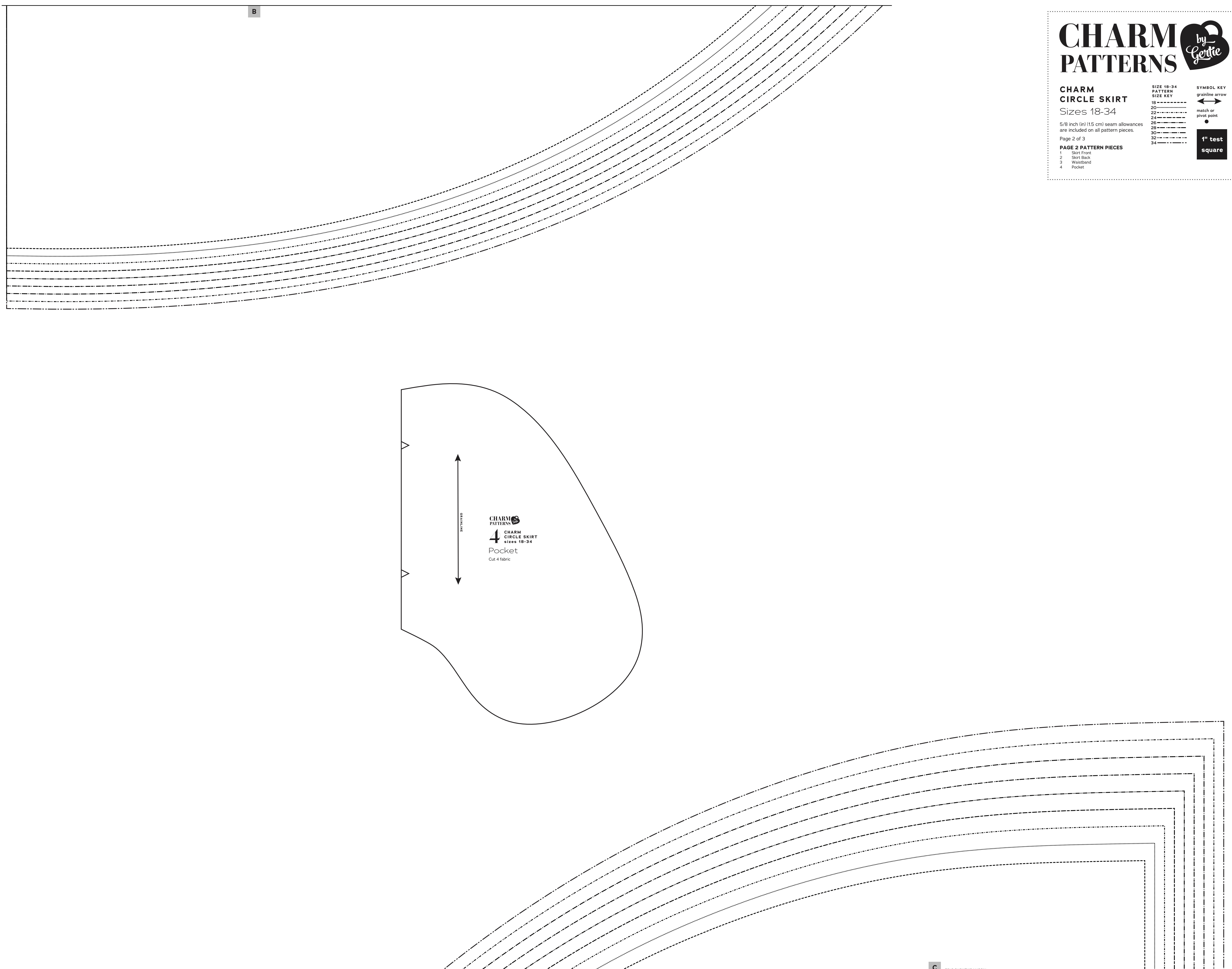
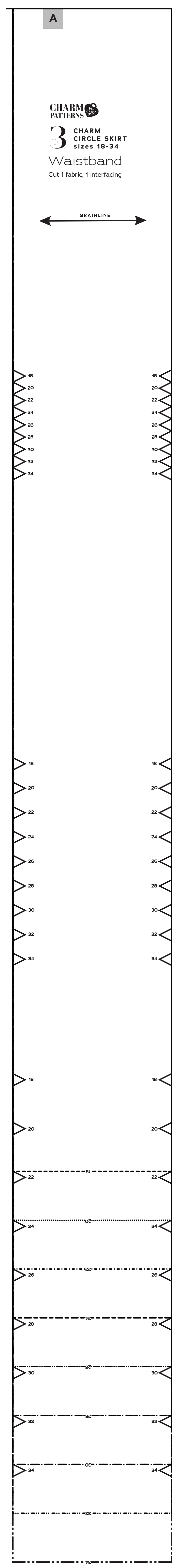
To use this pattern, you will need to tape the pieces together before cutting your fabric. Fold back the margins where indicated and match the letter boxes to the correspond pieces from the other pages. After the piece is assembled, cut your fabric.



CHARM PATTERNS
2 CHARM CIRCLE SKIRT
SIZES 18-34
Skirt Back
Cut 2 fabric

A FOLD BACK THIS MARGIN

B FOLD BACK THIS MARGIN



CHARM PATTERNS *by Gertie*

CHARM CIRCLE SKIRT
 Sizes 18-34

5/8 inch (1.5 cm) seam allowances are included on all pattern pieces.
 Page 2 of 3

PAGE 2 PATTERN PIECES

- 1 Skirt Front
- 2 Skirt Back
- 3 Waistband
- 4 Pocket

SIZE 18-34 PATTERN SIZE KEY

18	-----
20	-----
22	-----
24	-----
26	-----
28	-----
30	-----
32	-----
34	-----

SYMBOL KEY

- grainline arrow
- match or pivot point
- 1" test square

C FOLD BACK THIS MARGIN

CHARM PATTERNS



CHARM CIRCLE SKIRT

Sizes 18-34

5/8 inch (1.5 cm) seam allowances are included on all pattern pieces.

Page 3 of 3

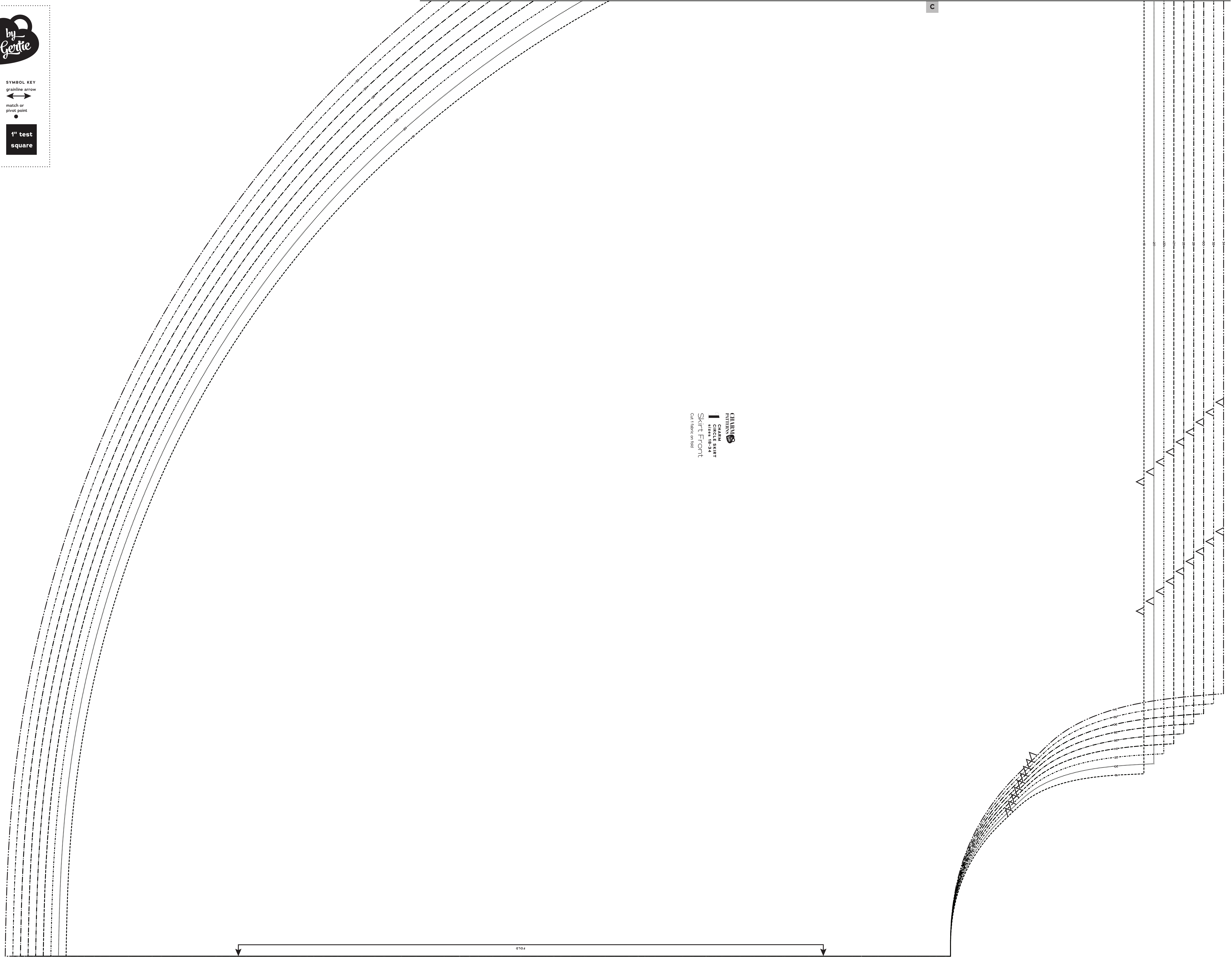
PAGE 3 PATTERN PIECES

1 Skirt Front

SIZE 18-34
PATTERN
SIZE KEY

SYMBOL KEY
grainline arrow
match or
pivot point

1" test
square



CHARM PATTERNS
1 CHARM CIRCLE SKIRT
SIZES 18-34
Skirt Front
Cut fabric on fold